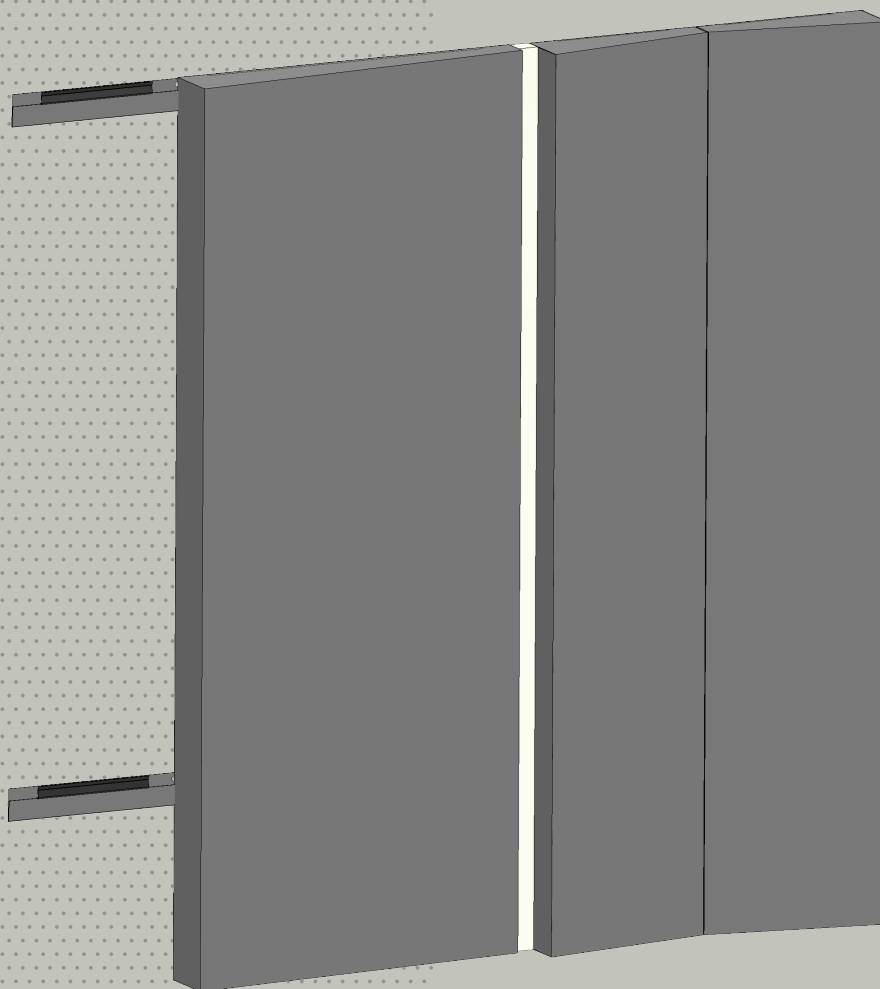


DAMPA®

Silent Board Flex

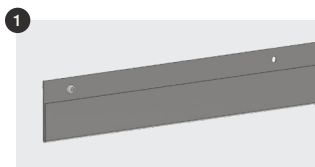
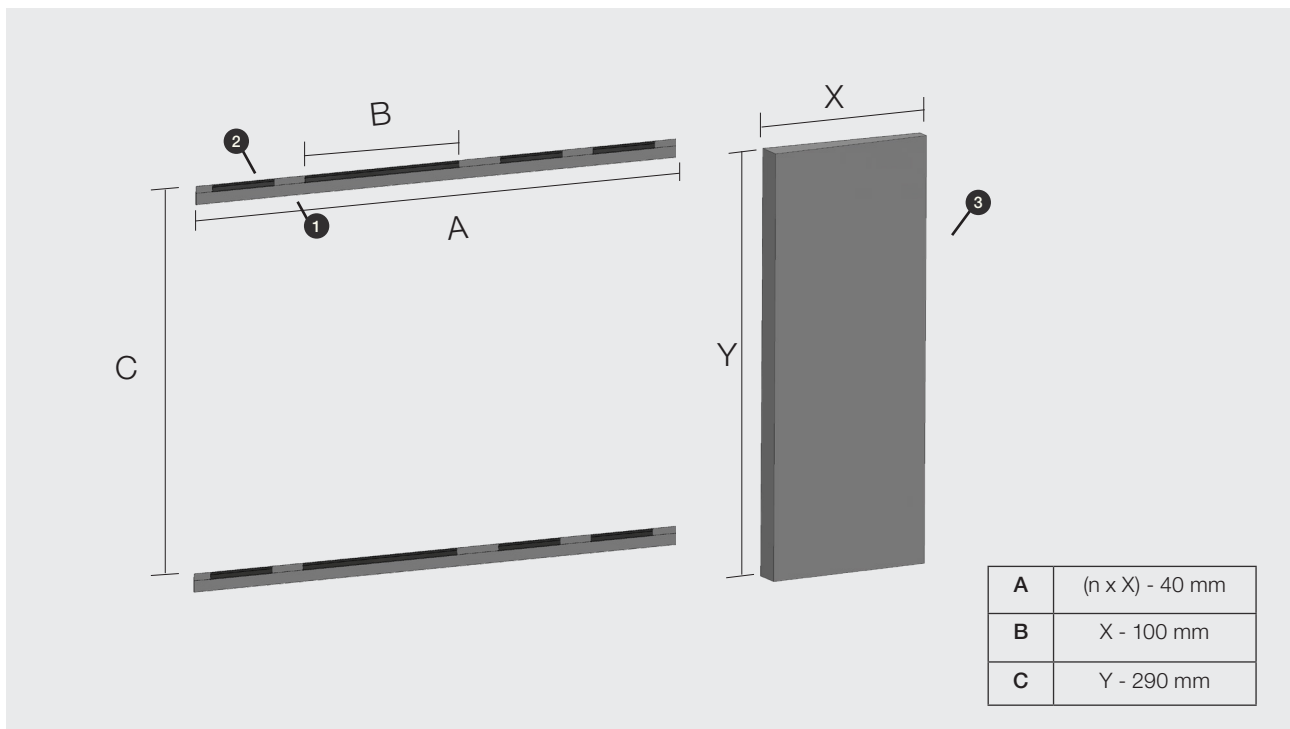
Installation guide



DAMPA®

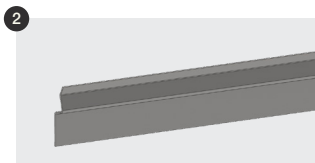
Installation of DAMPA® Silent Board Flex

DAMPA® Silent Board Flex can easily be installed with a few components. It is also possible to integrate light between the panels.



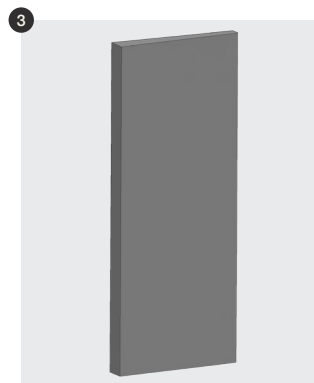
Wall carrier

Size: 55/35 x var. mm
Material: Galvanized steel



Mount

Size: 47 x 200, 500 or 2000 mm
Material: Galvanized steel

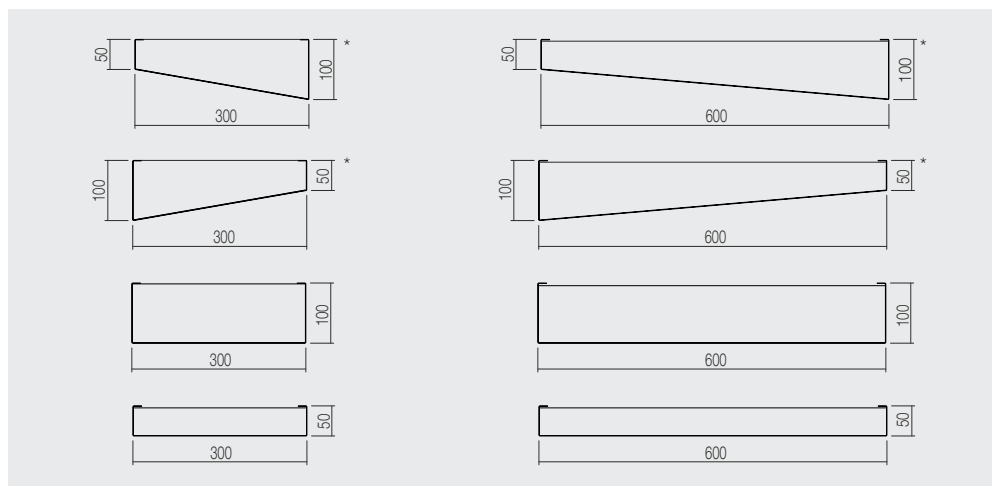


Wall panel

Size (W x H):
300 x 1200 mm
300 x 1500 mm
300 x 1800 mm
600 x 1200 mm
600 x 1500 mm
600 x 1800 mm

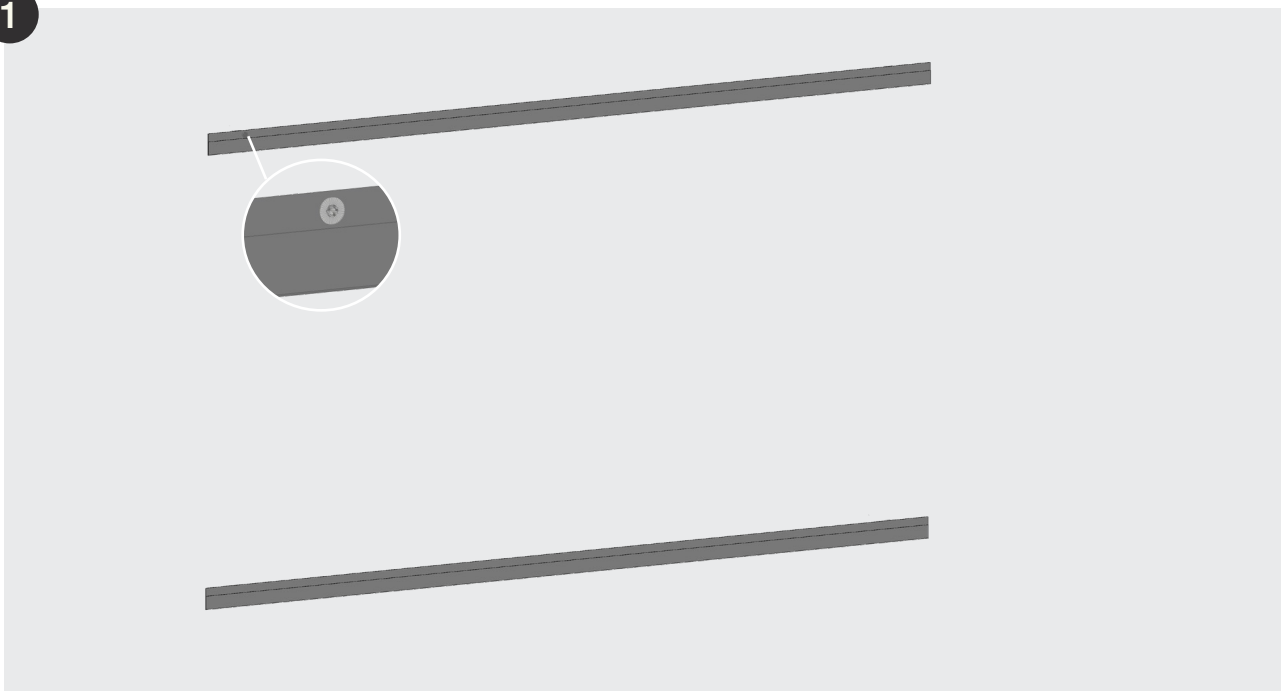
Available in various depths as illustrated below.

Wall panels (shown from the top)



* The wall panels can be turned upside down.

1

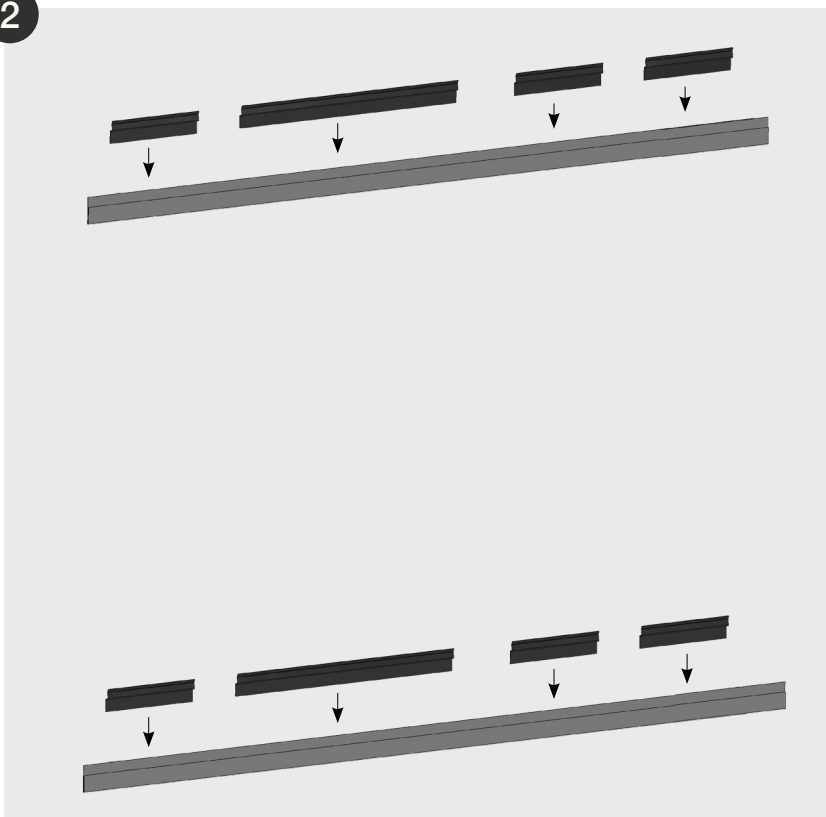


The length of the two wall carriers is determined by the chosen solution. The length of the wall carrier, A, is calculated as $(n \times X) - 40$ mm, where n represents the number of wall panels, as shown in the illustration on the previous page.

If lighting is integrated between the wall panels, the total width of the lighting elements must be added to the length of the wall carrier.

The wall carriers are mounted to the wall using flat screws, with a spacing of Y - 290 mm, measured at the upper edge of the carriers, as shown in the illustration on the previous page.

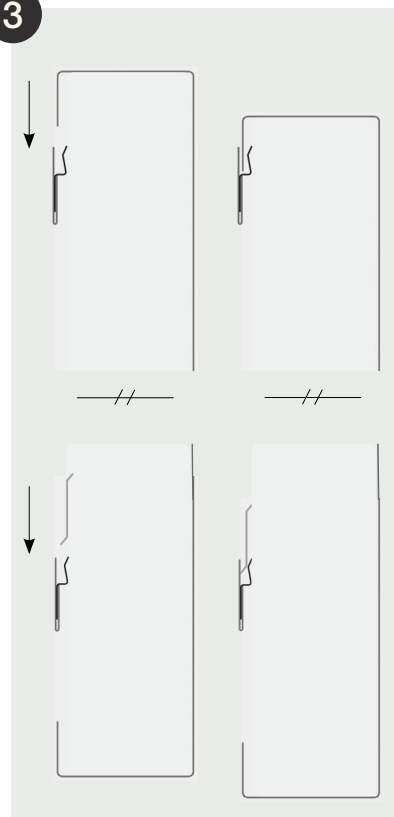
2



The mounts are then secured to the upper and lower wall carrier by inserting the flat edge of the mount into the carrier.

The mounts are evenly distributed along the wall carrier depending on the chosen combination of DAMPA® Silent Board Flex panels.

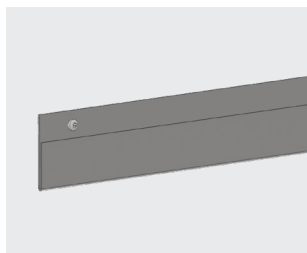
3



DAMPA® Silent Board Flex panels are installed by moving the upper edge of the panel and the rail on the back of the panel down into the mounts.

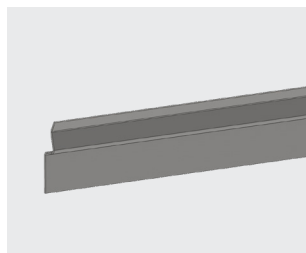
When the wall panel is safely secured, it cannot be pulled out from the wall.

DAMPA® Silent Board Flex Components



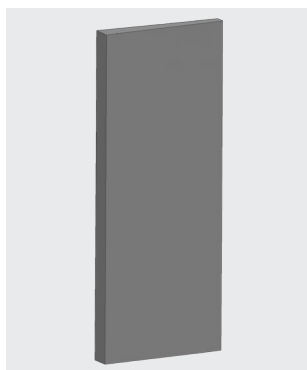
Wall carrier

Size: 55/35 x var. mm
Material: Galvanized steel



Mount

Size: 47 x 200, 500 or 2000 mm
Material: Galvanized steel

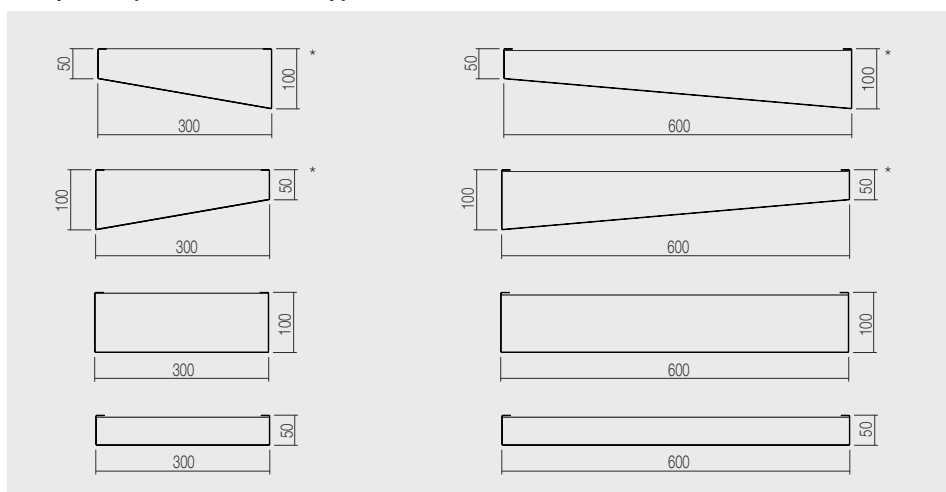


Wall panel

Size (W x H):
300 x 1200 mm
300 x 1500 mm
300 x 1800 mm
600 x 1200 mm
600 x 1500 mm
600 x 1800 mm

Available in various depths
as illustrated below.

Wall panels (shown from the top)



* The wall panels can be turned upside down.

DAMPA®

DK-5690 Tommerup, Tel.: +45 63 76 13 00
dampa@dampa.dk, www.dampa.com